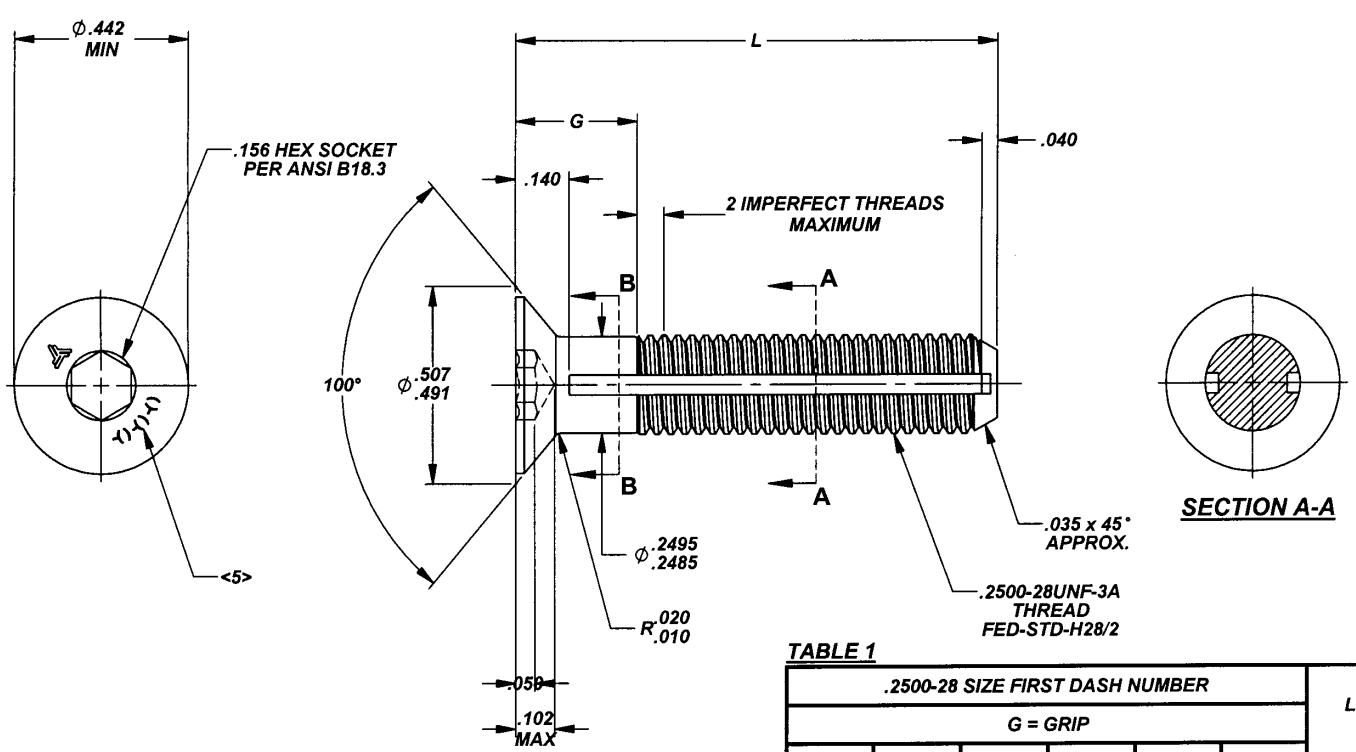


Camloc . Delron . Deutsch . Huck . K-Fast . Kaynar . Microdot . RAM . Rosan . Screwcorp . Tridair . Voi - Shan

MANUFACTURE OF THE PROPRIETARY PARTS SHOWN HERE WITHOUT WRITTEN CONSENT IS ABSOLUTELY PROHIBITED



NOTES; UNLESS OTHERWISE SPECIFIED:

1. MATERIAL:
 - 1.1 17-4PH CRES PER AMS5643.
2. HEAT TREAT:
 - 2.1 CONDITION H1025 PER AMS-H-6875, AMS2759.
3. FINISH:
 - 3.1 PASSIVATED PER AMS2700.
 - 3.2 CADMIUM PLATE PER AMS-QQ-P-416 TYPE II, CLASS 2, DESIGNATED BY LETTER "C". <13>
4. HEAD: 100° FLUSH HEAD PER NAS1102.
- <5> PART MARKINGS:
 - 5.1 HEAD OF SCREW TO BE MARKED WITH TRIDAIR LOGO, FIRST, SECOND AND THIRD DASH NUMBERS DEPRESSED .010 MAXIMUM DEEP.
6. SCREW TO BE USED WITH CA2210(-)R RETAINING RING TO CAPTIVATE TO PANEL.
7. PANEL PREPARATION: REFER TO CAL-STD-0260.
8. INSTALLATION: REFER TO ALCOA FASTENING SYSTEMS DRAWING NUMBER CA2210T(-).
- <9> TENSILE AND SHEAR STRENGTH ARE CALCULATED VALUES.
10. MECHANICAL PROPERTIES:
 - 10.1 ULTIMATE TENSILE STRENGTH MINIMUM: 2,838 LBS. <9>
 - 10.2 ULTIMATE SHEAR STRENGTH MINIMUM 2,740 LBS. SECTION A-A. <9>
 - 10.3 ULTIMATE SHEAR STRENGTH MINIMUM 3,465 LBS. SECTION B-B. <9>
12. TOLERANCE; UNLESS OTHERWISE SPECIFIED: DECIMALS .XX ±.02, .XXX ±.010, ANGLES ±2°.
13. PART CALLOUT EXAMPLE:
 - 13.1 CA22082 - 4 C - 10 - 25

INDICATES "L" IN .0625 (1/16") INCREMENTS (L = 1.562)

INDICATES "G" IN .03125 (1/32") INCREMENTS (G = .312)

FINISH CODE: (SEE NOTE 3), "C" = CADMIUM PLATE
NO DESIGNATION = PASSIVATED ONLY

NOMINAL THREAD SIZE: .2500-28UNF-3A

BASIC PART NUMBER

TABLE 1

.2500-28 SIZE FIRST DASH NUMBER						L
G = GRIP						
.156	.187	.218	.250	.281	.312	
- 5 - 7	- 6 - 7	- 7 - 7	- 8 - 7	-----	-----	.437
- 5 - 8	- 6 - 8	- 7 - 8	- 8 - 8	- 9 - 8	-----	.500
- 5 - 9	- 6 - 9	- 7 - 9	- 8 - 9	- 9 - 9	- 10 - 9	.562
- 5 - 10	- 6 - 10	- 7 - 10	- 8 - 10	- 9 - 10	- 10 - 10	.625
- 5 - 11	- 6 - 11	- 7 - 11	- 8 - 11	- 9 - 11	- 10 - 11	.687
- 5 - 12	- 6 - 12	- 7 - 12	- 8 - 12	- 9 - 12	- 10 - 12	.750
- 5 - 13	- 6 - 13	- 7 - 13	- 8 - 13	- 9 - 13	- 10 - 13	.812
- 5 - 14	- 6 - 14	- 7 - 14	- 8 - 14	- 9 - 14	- 10 - 14	.875
- 5 - 15	- 6 - 15	- 7 - 15	- 8 - 15	- 9 - 15	- 10 - 15	.937
- 5 - 16	- 6 - 16	- 7 - 16	- 8 - 16	- 9 - 16	- 10 - 16	1.000
- 5 - 17	- 6 - 17	- 7 - 17	- 8 - 17	- 9 - 17	- 10 - 17	1.062
- 5 - 18	- 6 - 18	- 7 - 18	- 8 - 18	- 9 - 18	- 10 - 18	1.125
- 5 - 19	- 6 - 19	- 7 - 19	- 8 - 19	- 9 - 19	- 10 - 19	1.187
- 5 - 20	- 6 - 20	- 7 - 20	- 8 - 20	- 9 - 20	- 10 - 20	1.250
- 5 - 21	- 6 - 21	- 7 - 21	- 8 - 21	- 9 - 21	- 10 - 21	1.312
- 5 - 22	- 6 - 22	- 7 - 22	- 8 - 22	- 9 - 22	- 10 - 22	1.375
- 5 - 23	- 6 - 23	- 7 - 23	- 8 - 23	- 9 - 23	- 10 - 23	1.437
- 5 - 24	- 6 - 24	- 7 - 24	- 8 - 24	- 9 - 24	- 10 - 24	1.500
- 5 - 25	- 6 - 25	- 7 - 25	- 8 - 25	- 9 - 25	- 10 - 25	1.562
- 5 - 26	- 6 - 26	- 7 - 26	- 8 - 26	- 9 - 26	- 10 - 26	1.625
- 5 - 27	- 6 - 27	- 7 - 27	- 8 - 27	- 9 - 27	- 10 - 27	1.687
- 5 - 28	- 6 - 28	- 7 - 28	- 8 - 28	- 9 - 28	- 10 - 28	1.750

INTERIM DOCUMENT REVISION		
Rev.	Date	DAF#
NEW	10/8/2018	117431

THIS DRAWING EMBODIES A CONFIDENTIAL, PROPRIETARY DESIGN & ALL DESIGN, MANUFACTURING PRODUCTION, USE & SALE RIGHTS REGARDING SAME ARE EXPRESSLY RESERVED.

S45323

APPROVED DATE 4 APR 12	CURRENT DESIGN ACTIVITY: ARCONIC Arconic Fastening Systems TRIDAIR PRODUCTS 3000 W. LOMITA BLVD. TORRANCE, CA 90505	TITLE: CAPTIVE SCREW, 100° HEAD, CRES, 155 KSI	CURRENT DESIGN ACTIVITY: CAGE CODE: 29372 SALES DRAWING NO. CA22082-4(-)(-)
REV. LETTER AND DATE NEW 4 APR 12	DAF NUMBER DAF 100365	UNLESS OTHERWISE SPECIFIED DIMENSIONS ARE IN INCHES & ASME Y14.5M TOLERANCES:	ANGLES DECIMALS .XX = ±.02 .XXX = ±.010
PROJECT NUMBER: 12PNL007			SHEET 1 OF 1